



Wallys Communications Technologies Co., Ltd.

Crear Value For Customers

Cooperation

Explore

Response



CONTENTS



PART 01

About us

PART 02

Our products

PART 03

Our services

PART 04

Cooperation company

- **Introduction**
- **Road of Wallys**
- **Innovation**



About us ▶

Introduction

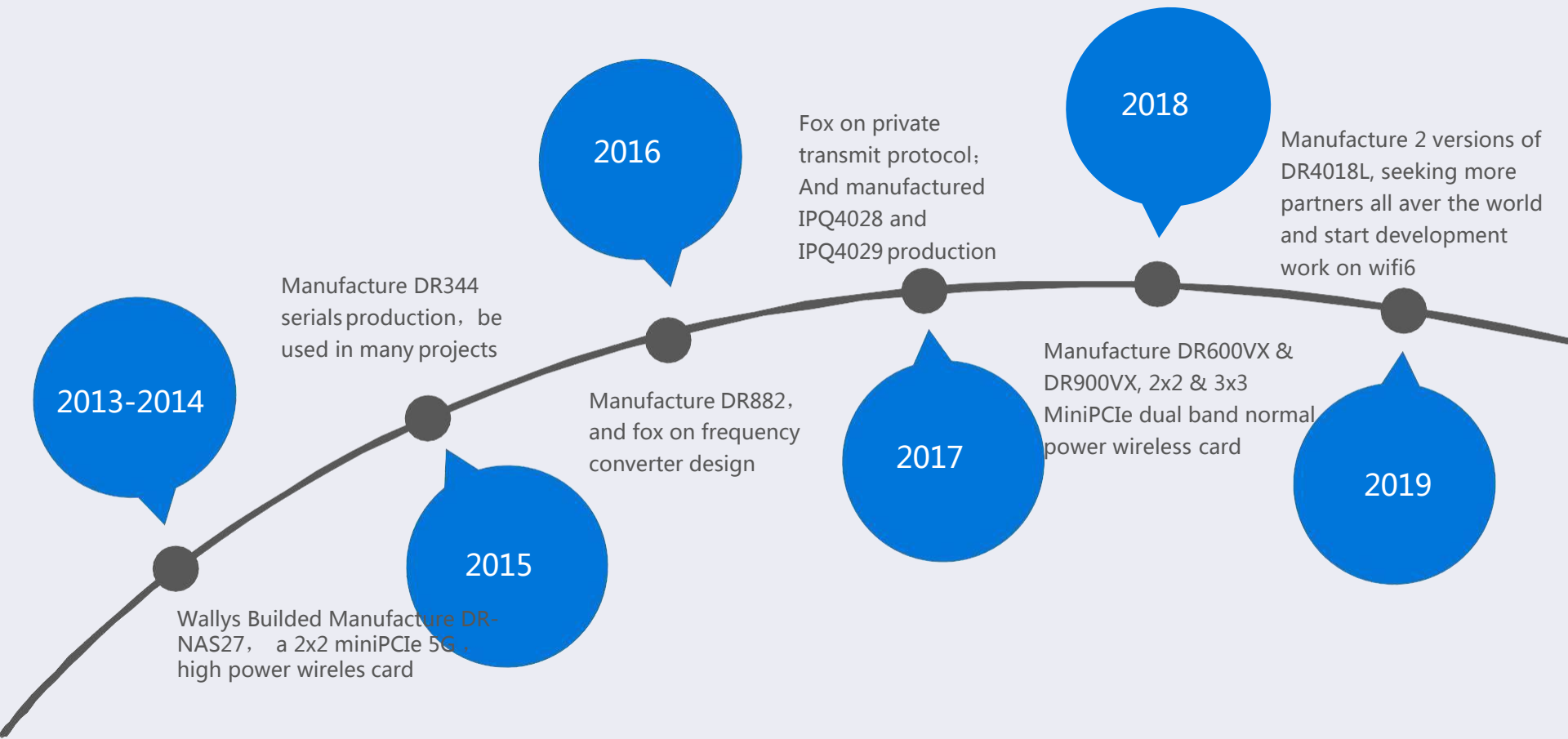


With over 15 years of experience in wireless industry and penetrating market olfaction, Wallys has designed and manufactured many high quality and cost-effective routerboards and wireless network cards.

In the complex market, Wallys products stand out and are affirmed by partners. From 802.11 a - ax, Wallys always keeps up with the most cutting-edge wireless technology, aimed to help customers take the preemptive opportunities to occupy the market and lead a win-win cooperation.



Road of Wallys





Innovation

01

We can design special products based on Qualcomm chipset such as down-conversion 900M ,WFC900, high power 5w, 5.8GHz wifi products and etc.

02

Our software is also innovative. For example, based on 4.9 GHz, 6 GHz TDMA protocol, we can add special algorithms to improve the anti-interference capability of the products.

03

Based on our innovation ,we can provide customer -specific solution .We can provide one-stop service for our customers, from idea, design ,manufacture to put the product into market.

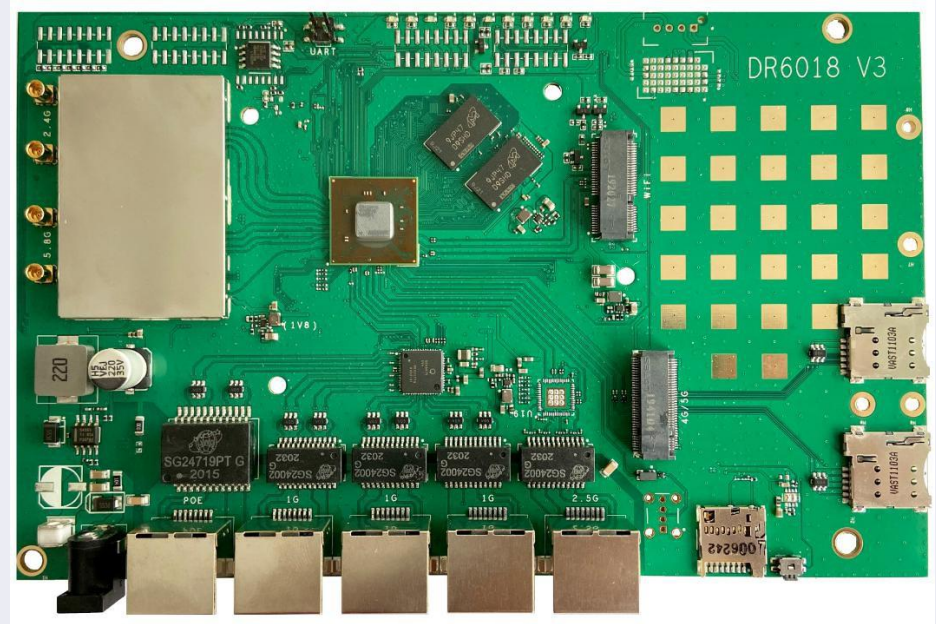
- **Router Board**
- **Mini PCIe Card**
- **Full Product**



Our Products ▶

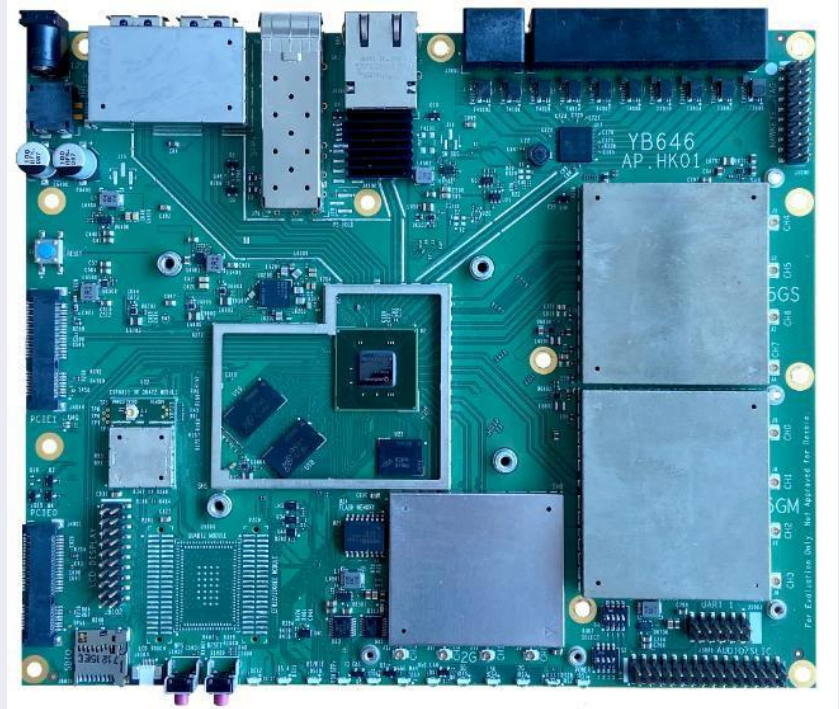
DR6018 V3

- Qualcomm-Atheros IPQ6010
- Quad-core ARM 64bit [A53@1.8GHz](#) Processor
- 1GB DDRL3L System Memory
- 32MB NOR Flash, 256MB NAND Flash
- Supports Dynamic Frequency Selection (DFS)
- 2x2On-board 2.4GHz radio, upto 573Mbps physical Data Rate
- 2x2On-board 5GHz radio, upto 1201Mbps physical Data Rate



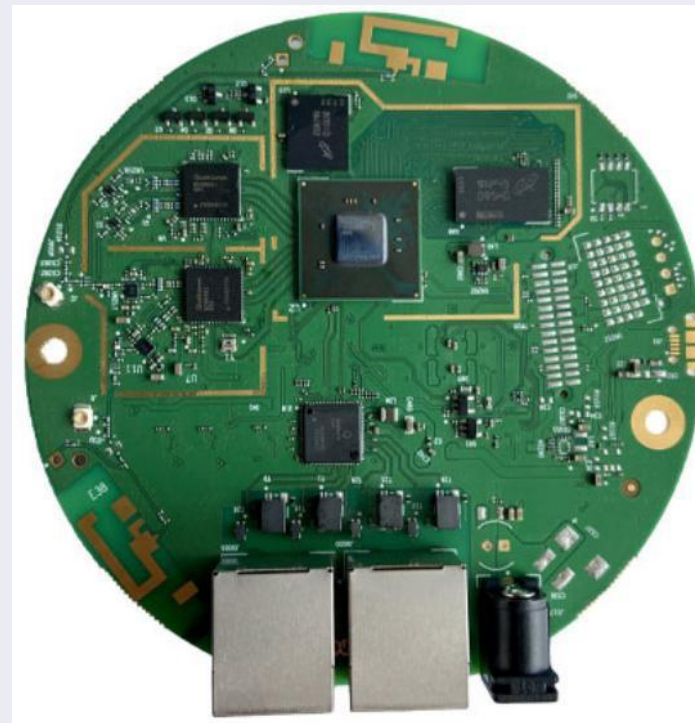
DR8074A(HK01)

- Qualcomm Atheros IPQ8074A AR Quad Core CPU
- On-board 5GHz radio, up to 4804Mbps physical data rate 32MB NOR Flash, 256MB NAND Flash
- On-board 2.4GHz radio, up to 1147Mbps physical data rate
- Support 11ax TX Beamforming
- Support 11ac/ax MU-MIMO DL and UL
- Support OFDMA DL and UL
- Tri-band support with 5G SBS (4x4/5GHz + 4x4/5GHz) + 4x4/2.4GHz
- Supports Dynamic Frequency Selection (DFS)



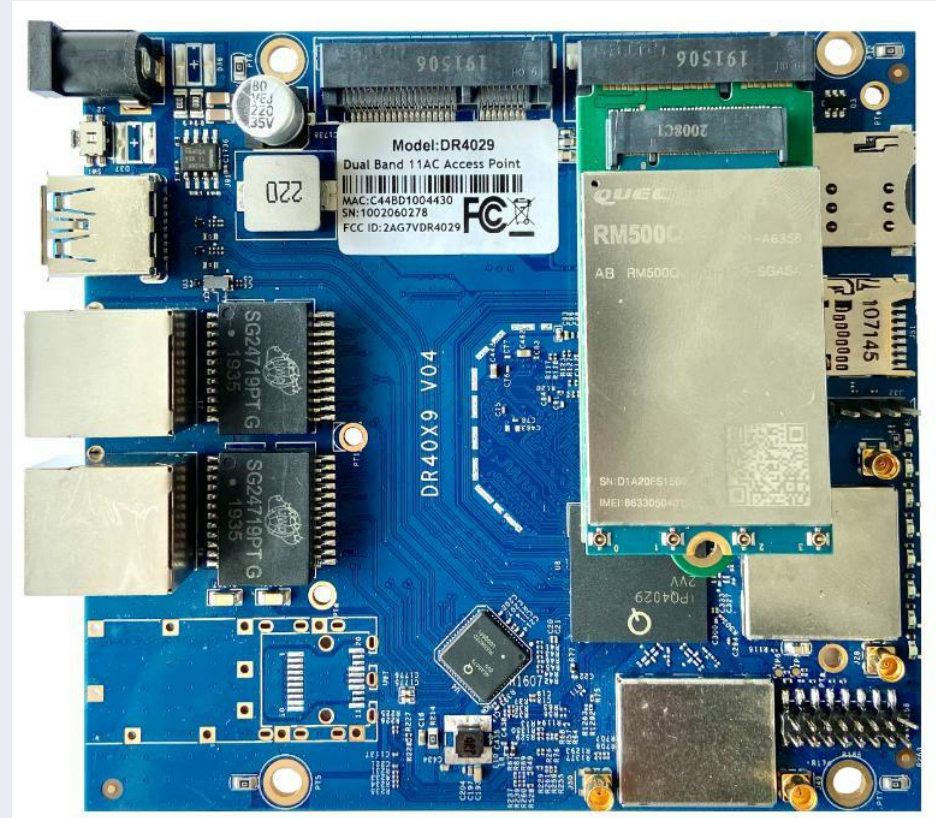
DR6000

- Qualcomm-Atheros IPQ6000
- Quad-core ARM 64 bit A53s 1.2GHz processor
- 2.4GHz, 2x2 MU-MIMO OFDMA Technology, up to 573Mbps
- 5GHz, 2x2 MU-MIMO OFDMA Technology, up to 1201Mbps
- 2 on board radios (Dual Band Concurrent Radio)
- Supports Dynamic Frequency Selection (DFS)



DR40X9

- Featuring with industrial-grade IPQ4019/IPQ4029 chipset
- Integrated with 2x 2 5G high power Radio module and 2x2 2.4G high power Radio module
- Support 4.940GHz to 5.825GHz Frequency Range
- Support 2.400GHz to 2.482GHz
- Support 2 x 5G MMCX Connectors and 2x2.4G MMCX
- Support 5MHz/10MHz/20MHz/40MHz/80MHz Bandwidth
- Support 11ABGN/AC
- RoHS compliance ensure a high level protection of human health and the environment from risks that can be posed by chemicals



DR40X8H

- Featuring with industrial-grade IPQ4018/IPQ4028 chipset
- Integrated with 2x 2 5G high power Radio module and 2x2 2.4G high power Radio module
- Support 4.940GHz to 5.825GHz Frequency Range;
- Support 2.400GHz to 2.482GHz
- Support 2 x 5G MMCX Connectors and 2x2.4G MMCX
- 20MHz/40MHz/80MHz Bandwidth
- Support 11ABGN/AC
- RoHS compliance ensure a high level protection of human health and the environment from risks that can be posed by chemicals



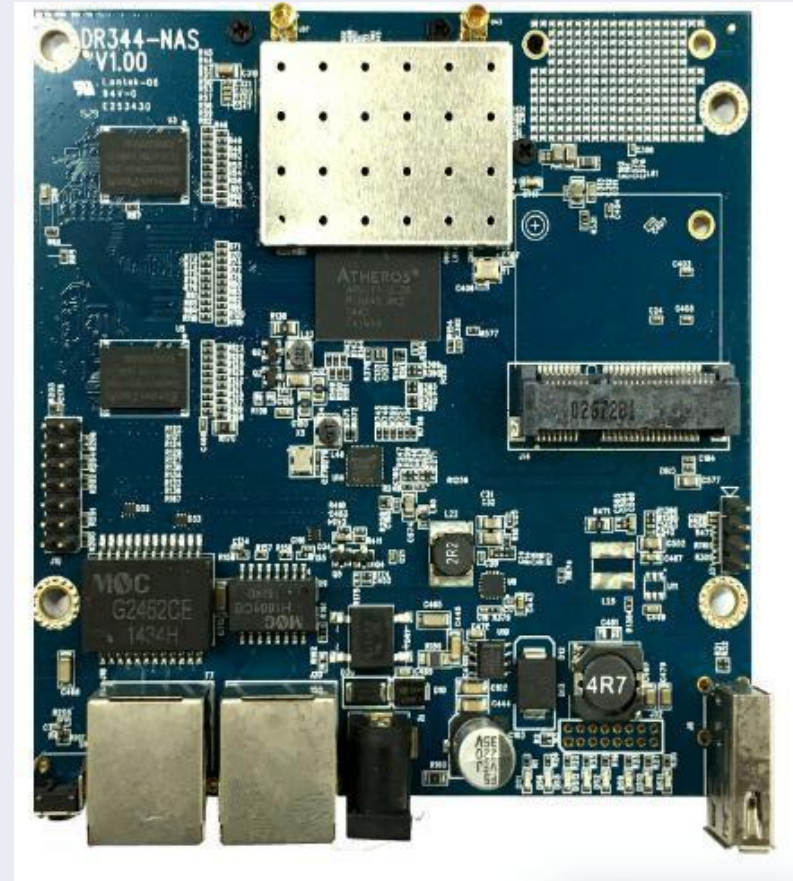
DR4018L

- Featuring with industrial-grade IPQ4018 chipset;
- Integrated with 2x 2 5G Radio module and 2x2 Radio module;
- Support 5.180GHz to 5.825GHz Frequency Range;
- Support 2.412GHz to 2.482GHz;
- Support 4*MMCX Connectors/2 x 5G UFL Connectors and 2x2.4G UFL;
- 20MHz/40MHz/80MHzBandwidth;
- Support 11ABGN/AC wave2 mode;
- Support 802.3at active POE/Support Passive POE(24V~52V);
- RoHS compliance ensure a high level protection of human health and the environment from risks that can be posed by chemicals



DR344

- Featuring with industrial-grade Atheros/AR9344(560MHz)chipset.
- Integrated with 1 x 5G high power (up to 30dBm aggregate) Radio Card.
- Supports 1 x 10/100Mbps Fast Ethernet Port and 1 x 10/100/1000Mbps GigabitEthernet Port.
- SupportLTE/3G application (Optional)
- Supports 2 x 5G MMCX connectors.
- Support 5M/10M/20M/40M Bandwidth.
- Support 1 x USB2.0 (Optional)
- Supports operating frequency from 2.312 GHz to 2.502 GHz(Add Card) and 4.92GHz to 6.085GHz.
- RoHS compliance ensure a high level protection of human health and the environment from risks that can be posed by chemicals.



DR4018L_R

- Featuring with industrial-grade IPQ4018 chipset
- Integrated with 2x 2 5G Radio module and 2x2 Radio module
- Support 5.180GHz to 5.825GHz Frequency Range
- Support 2.412GHz to 2.482GHz
- Support 2 x 5G UFL Connectors and 2x2.4G UFL
- 20MHz/40MHz/80MHz Bandwidth
- Support 11ABGN/AC wave2 mode
- RoHS compliance ensure a high level protection of human health and the environment
- from risks that can be posed by chemicals

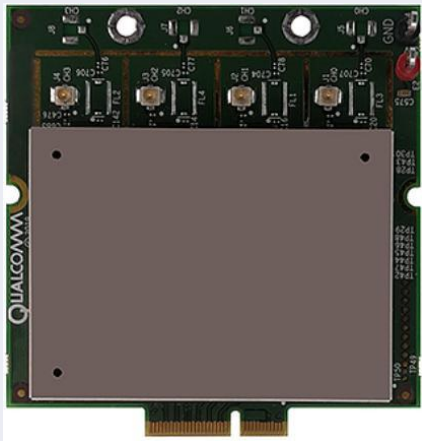




Qualcomm chipsets are the basis of most of our products, we have a special technical team researching and making developments based on it. We are willing to build prototypes and make demo boards for Qualcomm.

As we have many years of experience in R&D and production based on Qualcomm. We hope to grow together with Qualcomm and keep up with the development in the wireless market.

11AX WiFi Card



DR9074-5G

- Qualcomm Atheros QCN9074
- 5GHz, max 23dBm per chain, up to 4949Mbps
- Single Band 5GHz 4x4 WiFi 6 (802.11ax)
- 4 spatial streams (4SS)
- M.2 E Key Interface
- PCI Express 3.0 Interface
- Supports Dynamic Frequency Selection (DFS)

DR9074-6E

- Qualcomm Atheros QCN9074
- 6GHz, max 23dBm per chain, up to 4949Mbps
- Single Band 6GHz 4x4 WiFi 6E (802.11ax)
- 4 spatial streams (4SS)
- M.2 E Key Interface
- PCI Express 3.0 Interface

DR9074-2.4G

- Qualcomm Atheros QCN9074
- 2.4GHz, max 23dBm per chain, up to 1147Mbps
- Single Band 2.4GHz 4x4 WiFi 6 (802.11ax)
- 4 spatial streams (4SS)
- M.2 E Key Interface
- PCI Express 3.0 Interface



WFC900M

- Featuring with industrial-grade Atheros' s AR9582 chipset
- Integrated with 2x 2 900M high power Radio Card
- 902MHz to 928MHz Frequency Range
- 2 x MMCX Connectors
- 5M/10M/20MHz Bandwidth
- Support 11AN
- RoHS compliance ensure a high level protection of human health and the environment from risks that can be posed by chemicals





Mini PCIe Card

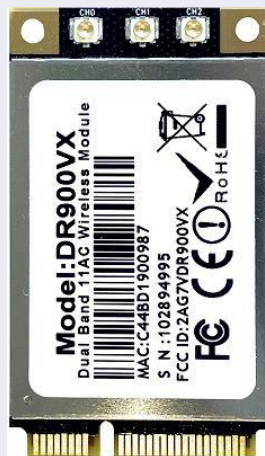
DR600VX FCC

& CE QCA9880
802.11ac
2x2 2.4G/5G
2x2 MIMO Technology,
up to 867Mbps



DR900VX

FCC & CE
QCA9880
802.11ac
2x2 2.4G/5G
3X3 MIMO Technology,
up to 1.3Gbps



DR882

QCA9882 802.11ac
High Power
2x2 5G MMCX Connectors
20/40/80MHz Bandwidth



DR-AP6018 V3

IPQ6010 802.11AX

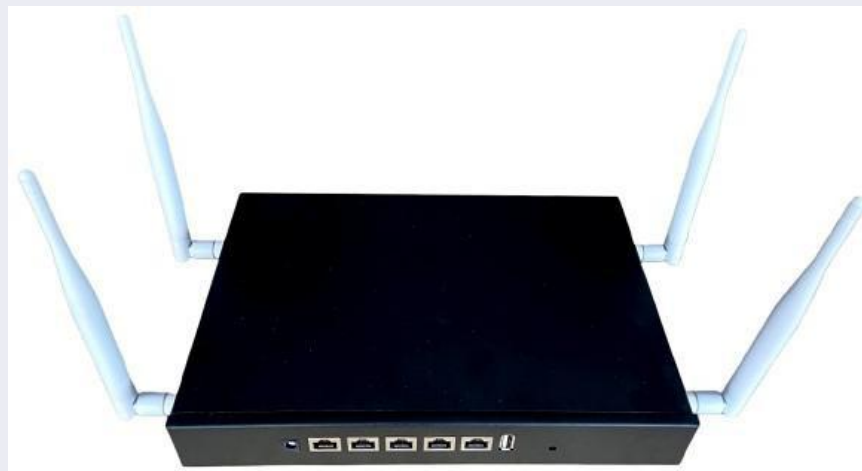
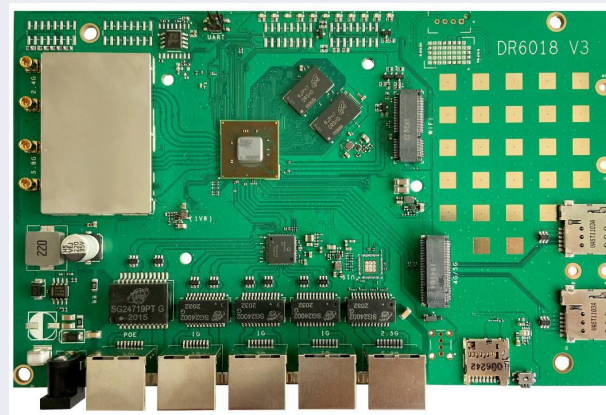
1 x 1Gbps Ethernet Ports & POE

3 x 1Gbps Ethernet Ports

1x 2.5Gbps Ethernet Port

Support: QUECTEL RM500Q-GL

Support: QCN9074 WiFi 6E Card



Full Product

DR-AP4029

IPQ4019/IPQ4029

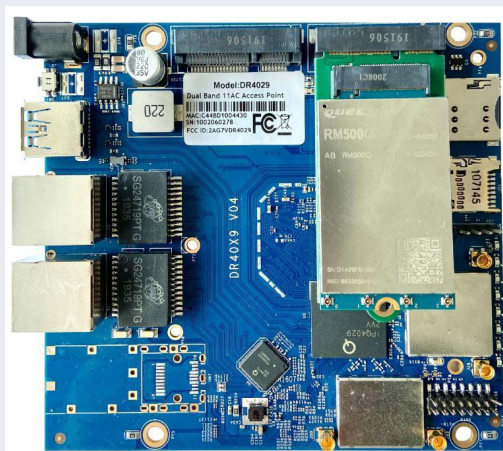
802.11ac

High Power

Multi-interface

2x2 2.4G&5G

Support 5/10MHz



Full Product

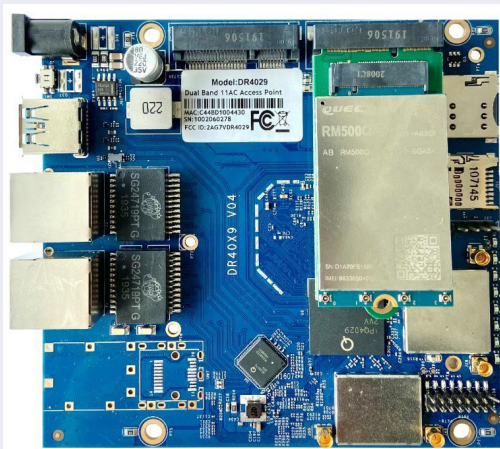
DR882

QCA9882 802.11ac
High Power
2x2 5G MMCX Connectors
20/40/80MHz Bandwidth



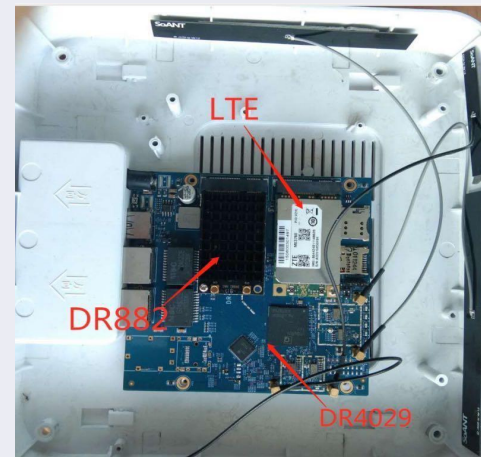
DR4029

IPQ4019/IPQ4029
802.11ac
High Power
Multi-interface
2x2 2.4G&5G
Support 5/10MHz



DR-P002

Support Board: DR40x8/DR40x9
Material: Plastics
Indoor/Outdoor: Indoor
Dimension: 22cm*22cm*4cm





Full product

DR882

QCA9882 802.11ac

High Power

2x2 5G MMCX Connectors

20/40/80MHz Bandwidth



DR342

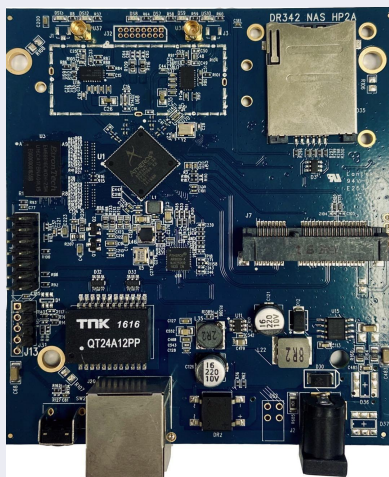
AR9342

1x10/100/1000GE Port

High Power (up to 30dBm aggregate)

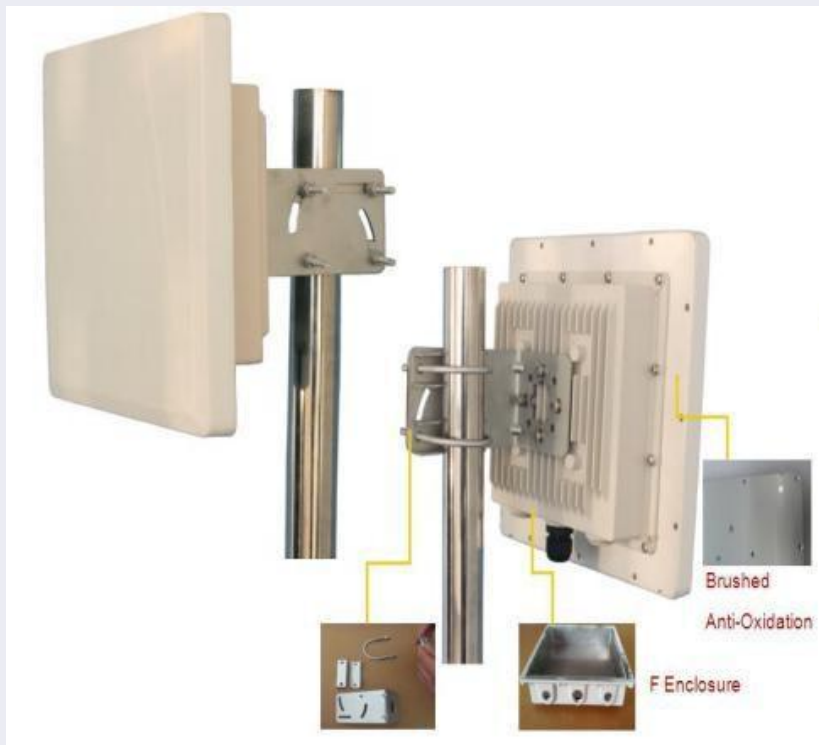
2x2 5G MMCX Connectors

Support LTE/3G application (Optional)



5GHz Enclosure Panel Antenna

DRC-5159-19D17F is a dual polarization enclosure antenna. It's a professional quality antenna designed for service providers in 5GHz broadband. CPE can be put in enclosure.



Application

- 5.1-5.8GHz 802.11a/n WLAN System
- Point to Point Wireless Bridge
- Wide 17° Horizontal Beamwidth
- IP66 Waterproof Level
- UV Protected and Durable ABS Radome
- Stainless L Type Bracket,U-Slot & U-Bolt

Related Optional Accessories





More Products



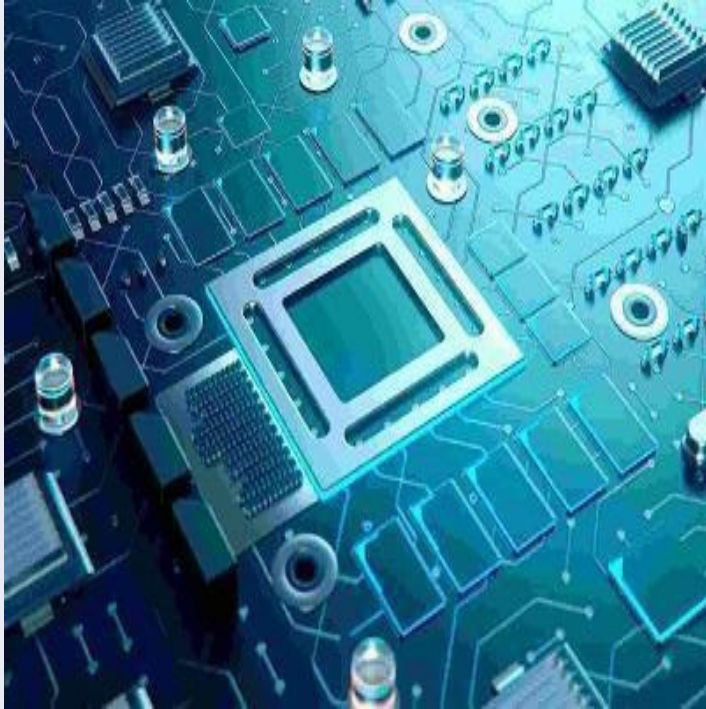
More informations of production, you can get from www.wallystech.com



Our services ▶

- **Software & Hardware design**
- **Prototype**
- **Product Testing & Certification**
- **OEM & ODM**
- **Customization**

Software & Hardware Design



We have experienced R&D engineer team with a demonstrated history of working in the wireless industry. Skilled in RF and embedded communications , network protocol, firmware ,openwrt ,linux system development , analog and Digital Circuit Design, Network Processors, Power supplies ,PCB design and layout and etc.,

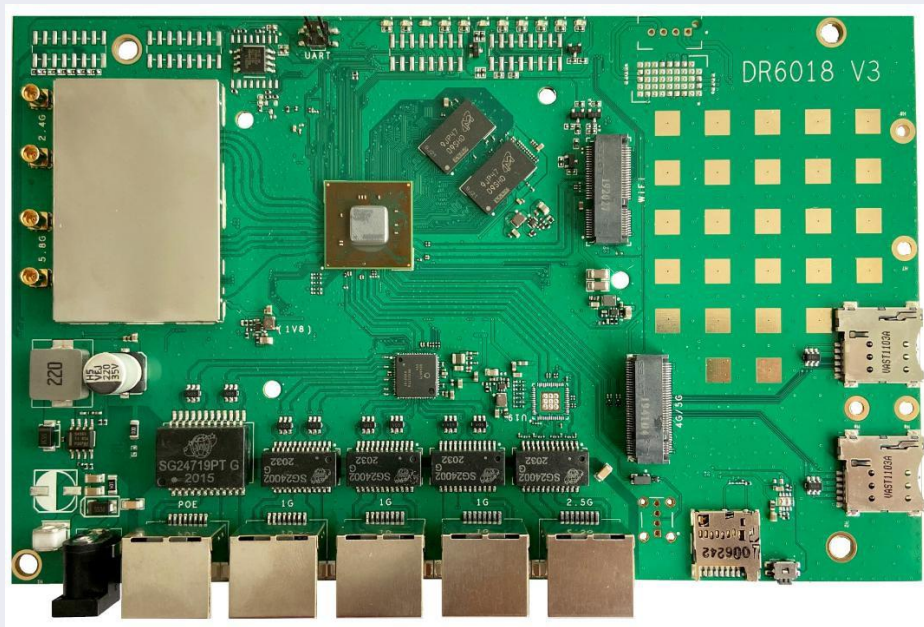
Many years of expertise in software and hardware design allow us to deliver solutions based on your specification list for commercial and industrial applications. We are able to think ahead and deliver design that meet and exceed customer requirement.



Prototype

Wallys could help clients build Prototype. We have a professional technical team supporting. Helping you realize your idea is our aspiration. Everything on RF is our enthusiasm. Different chipsets, different materials, different features, different designs...we could realize all you want.

Making your idea visible and alive is what we persuit.



Product Test and Certification



We work exclusively with certified labs and also perform testing in-house, covering a wide range of certifications and standard, including FCC,CE and etc.

Our lab testing solution provides exhaustive due diligence to limit your company' s risk for liability and ensure that product meet all legal and safety requirement.

OEM & ODM

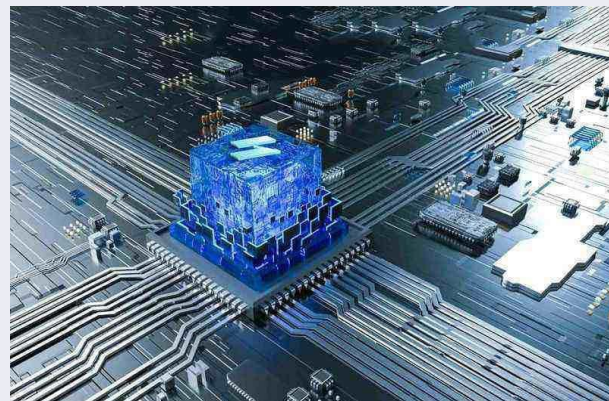
● OEM

Since its inception in 2010, Wallys has had a strong team, including dozens of research and development personnel, a complete set of assembly lines, they play an irreplaceable role. Under the premise of ensuring the product quality, we will deliver the goods at the fastest speed and maximize the product benefit.



● ODM

China has a complete wireless communication industry group, which enables ODM manufacturers to obtain the supply of low-cost components. Years of reform and opening-up have made China an ideal low-cost manufacturing base. Compared with the rapid development of the market, ODM services which focus more on design capability and production experience become more competitive.





Customization

- In addition to the PCBA mainboard, we can also customize indoor or outdoor antennas, which we have extensive experience in.
- There is also the Tooling. We can do the Tooling for the customer, to undertake a variety of materials mainly metal and plastic enclosure production. Whether antenna enclosure or router enclosure, we can customize for you.
- Besides of the Qualcomm chips we currently use, we can also use different chips to design according to customers' needs.
- Welcome to email us for any project or question about RF and embedded systems.
- Moreover, we can also do FCC and CE certification related to wireless communication products for you. There is a better price for certification in China.





Cooperation Company ▶

Our Partnerer



- Leading developer of semiconductor system solutions
- Innovator of wireless and networking systems
- Manufactured on low-cost, standard complementary metal-oxide semiconductor (CMOS) processes



- Linux distributor for embedded devices
- Provide fully writable file system with package management
- Provide framework for full customization



- Skyworks Solutions, Inc. is an innovator of high performance analog semiconductors.



Our Customer



Thanks

•

Wallys Communications
Technologies Co., Ltd.

www.wallystech.com

<https://github.com/Wallystech/openwrt>